

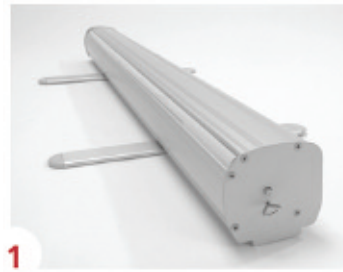
# Elite Banner Stand Retractable

Quality Display at a Very Affordable Price



## Elite Banner Stand Single Sided

Banner Size : 33" x 78"  
Weight: 8lbs.



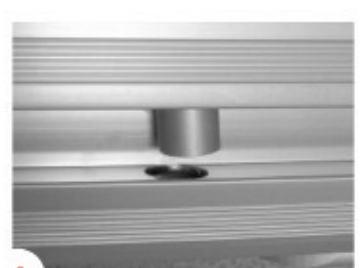
1



2



3



4



5



6

### Stylish Top Rail

Clamp style for easy change  
of graphics  
Holds graphics securely



With Optional Light

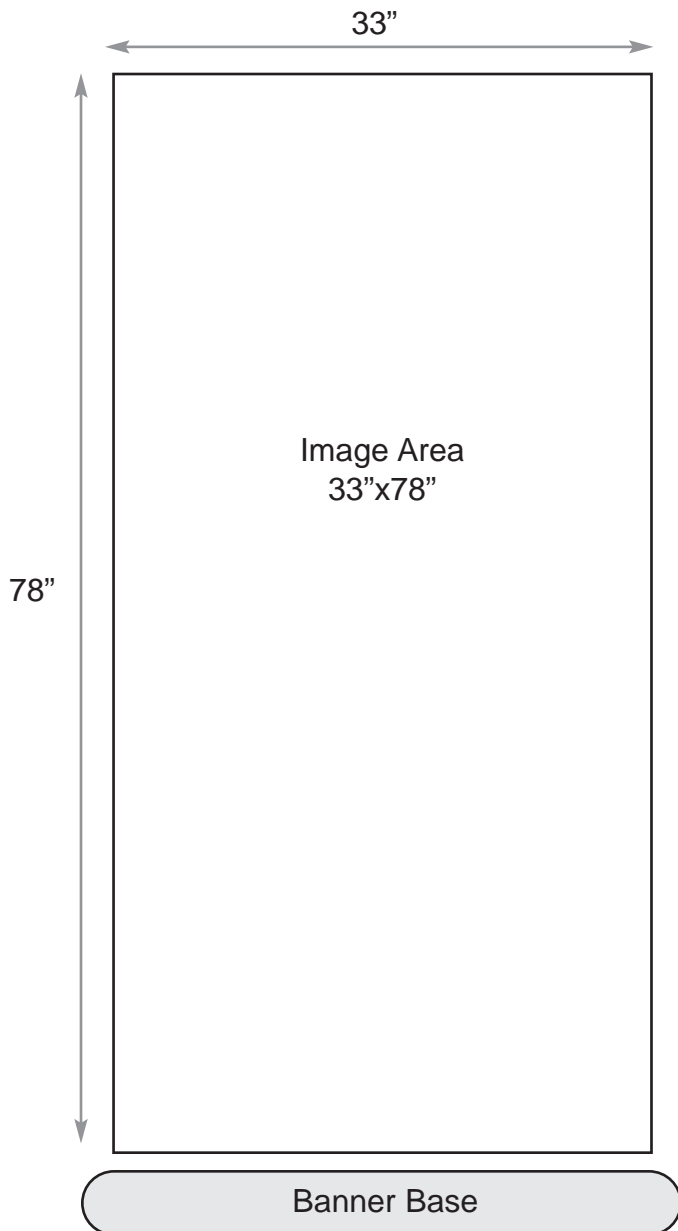


Carrying Case

# Elite Banner Stand

## Retractable

---



- **Visual Size 33" x 78" (image area)**
- **Print Size 33" x 84" (includes 6" bleed on bottom)**
- **Add 1/4" bleed on the top & sides**
- **Add 6" bleed to the bottom if there is a background image**
- **150dpi**
- **Outline or curve any text**
- **Save as: PDF, tiff, eps or jpeg**

### **Setup Instructions:**

1. Take the display out of the carrying bag.
2. Place the display base on the ground.
3. Assemble the rod.
4. Insert the rod into the base.
5. Pull the graphic out by pulling on the top rail.
6. Attach the pole to the top rail.

- Keep critical graphics like text & logos away from the trim edge & base.
- Panel printed on a 6 colour UV printer.
- FTP site available to upload your image - Contact us for details.